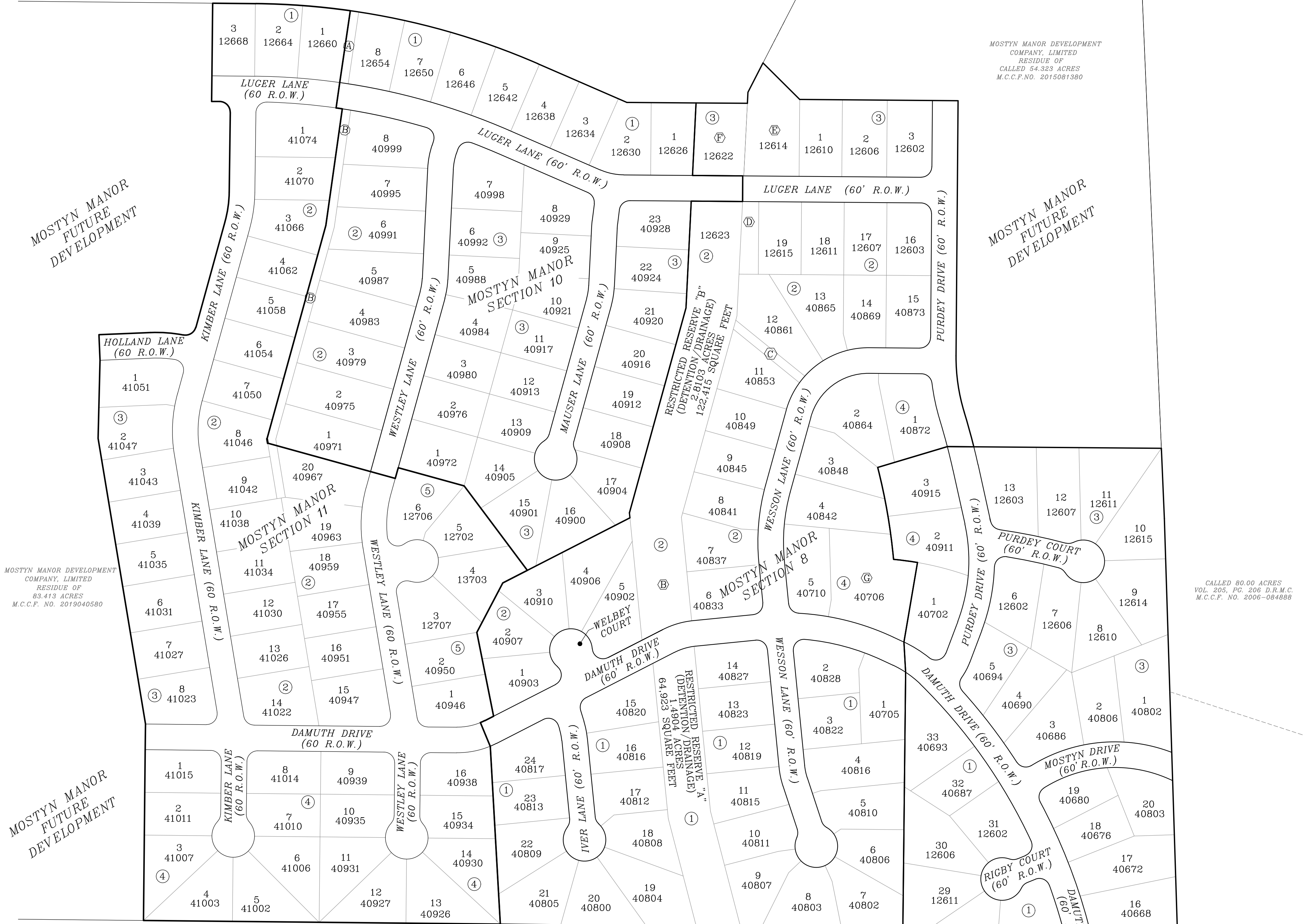


MOSTYN MANOR DEVELOPMENT
 COMPANY, LIMITED
 RESIDUE OF
 83.413 ACRES
 M.C.C.F. NO. 2019040580

MOSTYN MANOR DEVELOPMENT
 COMPANY, LIMITED
 RESIDUE OF
 CALLED 54.323 ACRES
 M.C.C.F. NO. 2015081380



MOSTYN MANOR DEVELOPMENT
 COMPANY, LIMITED
 RESIDUE OF
 83.413 ACRES
 M.C.C.F. NO. 2019040580

CALLED 80.00 ACRES
 VOL. 205, PG. 206 D.R.M.C.
 M.C.C.F. NO. 2006-084888

MOSTYN MANOR DEVELOPMENT
 COMPANY, LIMITED
 RESIDUE OF
 83.413 ACRES
 M.C.C.F. NO. 2019040580

35.6531 ACRES
 M.C.C.F. NO. 9400925

REMAINDER OF
 CALLED 394.93 ACRES
 VOL. 131, PG. 239 D.R.M.C.
 M.C.C.F. NO. 2006-084888

MOSTYN MANOR SECTION SEVEN

A SUBDIVISION OF 40.5819 ACRES OF LAND OUT OF THE CYRUS WICKSON SURVEY, ABSTRACT 600 MONTGOMERY COUNTY, TEXAS.
 69 LOTS, 1 RESERVE, 4 BLOCKS

MOSTYN MANOR SECTION EIGHT

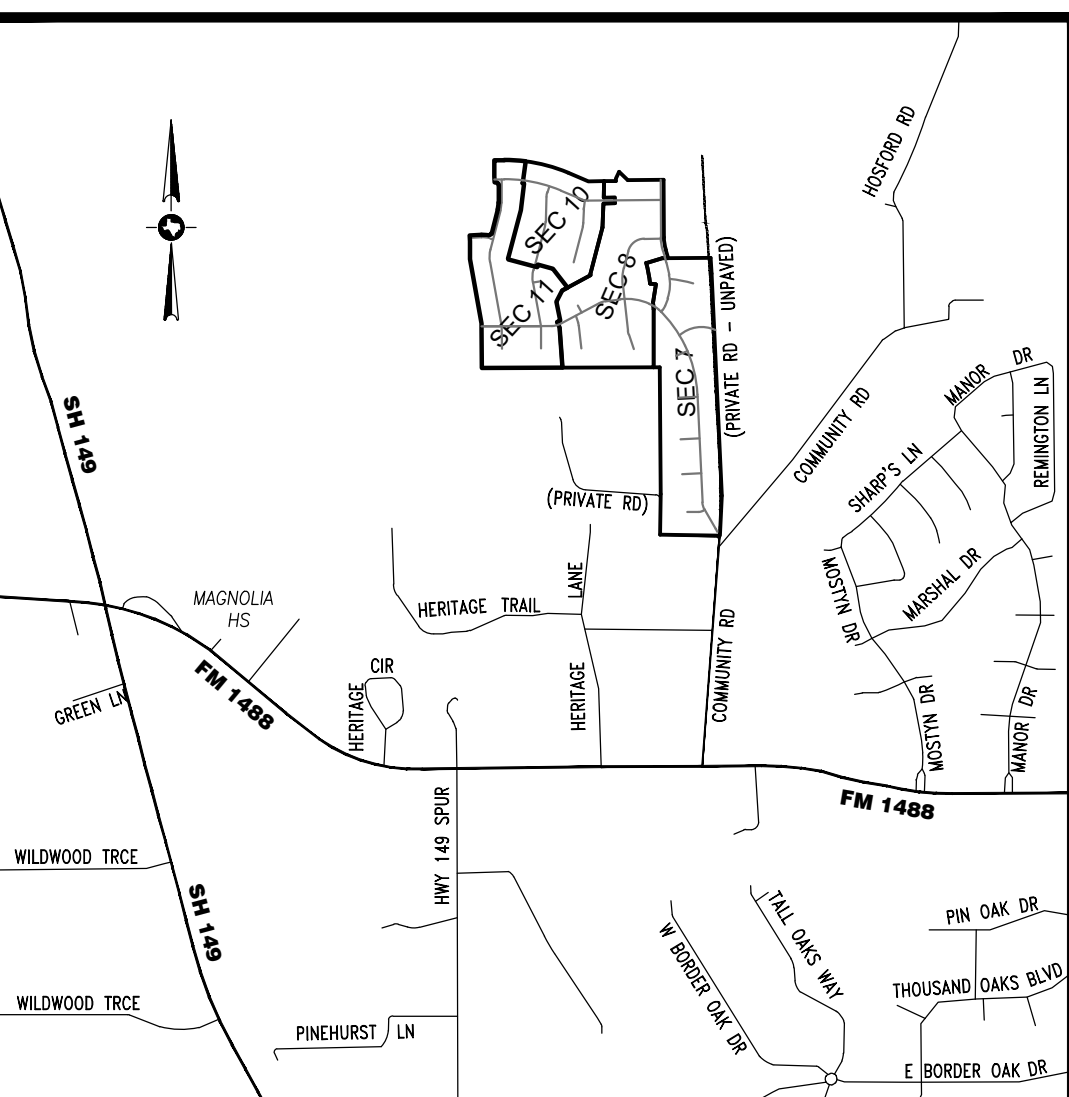
A SUBDIVISION OF 34.9246 ACRES OF LAND OUT OF THE CYRUS WICKSON SURVEY, ABSTRACT NUMBER 600, MONTGOMERY COUNTY, TEXAS.
 51 LOTS, 7 RESERVES, 4 BLOCKS

MOSTYN MANOR SECTION TEN

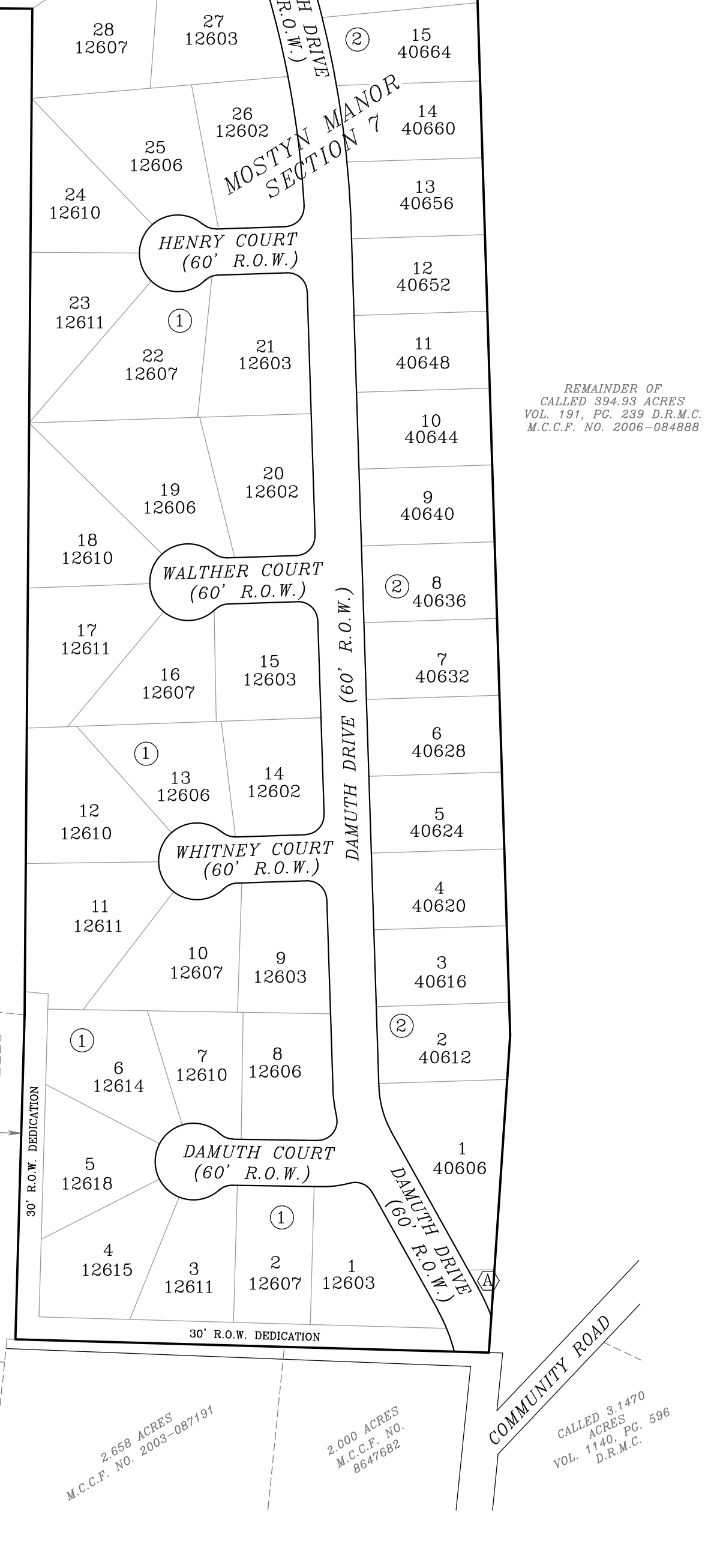
SUBDIVISION OF 20.6839 ACRES OF LAND OUT OF THE CYRUS WICKSON SURVEY, ABSTRACT 600 MONTGOMERY COUNTY, TEXAS.
 39 LOTS, 2 RESERVES AND 3 BLOCKS

MOSTYN MANOR SECTION ELEVEN

SUBDIVISION OF 28.1958 ACRES OF LAND OUT OF THE CYRUS WICKSON SURVEY, ABSTRACT 600 MONTGOMERY COUNTY, TEXAS.
 53 LOTS, 1 RESERVE AND 5 BLOCKS



VICINITY MAP
 KEY MAP 213 C&G



2.658 ACRES
 M.C.C.F. NO. 2008-087191

2.000 ACRES
 M.C.C.F. NO. 8677682

CALLED 3.1470
 VOL. 144, PG. 296
 D.R.M.C.